

Sustainable Community Development

Holland code family: Doers

Focus Award

www.roguecc.edu/Counseling/HollandCodes/test

The Sustainable Community Development focus award (18-23 credits) provides students with the knowledge, skills and experiences that will allow them to play a vital role in developing and strengthening their communities for the twenty-first century. Diversity and sustainability are issues that present great challenges as well as incredible opportunities to create strong, thriving communities that meet the needs of their members and the environment.

Community development includes nurturing the integration of socially, culturally, and economically diverse groups to work together for common interests and the expansion of sustainable practices. Community development is studied holistically, including learning leadership and communication skills, how to effectively utilize the diversity inherent in American communities, and how people can live sustainably in their own locales.

Completing the Sustainable Community Development focus award is an excellent addition to a resume. Knowledge of sustainability and diversity issues may be skills employers consider. Students should be aware that prerequisites exist for most courses, so they should plan accordingly.

What skills will you learn?

Visit <http://go.roguecc.edu/department/program-learning-outcomes>.

What are the employment opportunities?

Visit <http://www.roguecc.edu/GainfulEmployment>.

Required courses

(must be completed at RCC)

Course No.	Course Title	Credits
SOC213	Race and Ethnicity in the U.S.	4
SOC228	Environment and Society	4
SRV101	Service Learning	1-2
TOTAL REQUIRED CREDITS		9-10

Electives

(Choose elective courses from the following):

Leadership and Communication

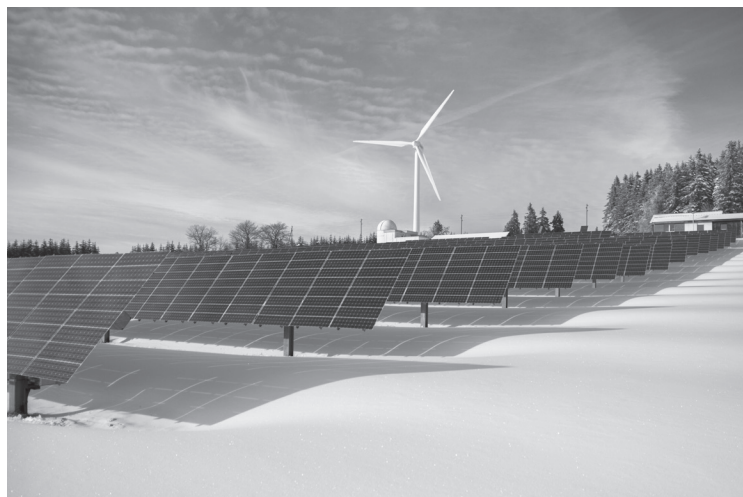
(3-4 credits minimum)

Course No.	Course Title	Credits
BA131	Introduction to Business Computing	4
BA214	Business Communications	4
ED120/121/122	Leadership I/II/III	1-3
SP111	Fundamentals of Public Speaking	4
SP115	Introduction to Intercultural Communication	4
WR227	Technical Writing	4
—	Cooperative Work Experience as approved within major ¹	3

Diversity

(one class, 3-4 credits)

Course No.	Course Title	Credits
ANTH110	Introduction to Cultural Anthropology	4
CJ214	Crime, Justice and Diversity	4
COMM237	Communication and Gender	4
ECE275	Anti-bias Education	3
ENG257	African American Literature	4
ENG260	Introduction to Women Writers	4
HUM215/216/217/218/219	Native American Arts/Cultures	4
IS110	Introduction to International Studies I	4
REL201	World Religions	4
SOC235	The Chicano/Latino Historical Experience	4
SOC218	Sociology of Gender	4
—	Cooperative Work Experience as approved within major ¹	3



Sustainability

(one class, 3-5 credits)

Course No.	Course Title	Credits
BI213	General Biology III with lab	4
EET113	Exploration of Alternative Energies (may not transfer)	3
EET118	Introduction to Renewable Energy Systems (may not transfer)	5
ENV111	Introduction to Environmental Science	3
GEOG100	Introduction to Physical Geography	3
GEOG110	Introduction to Cultural and Human Geography	3
REL243	Nature, Religion and Ecology	4
—	Cooperative Work Experience classes as approved within major ¹	3

TOTAL ELECTIVE CREDITS

9-13

TOTAL FOCUS AWARD CREDITS

18-23

Note: This focus award is not a formal, transcribed degree or certificate but recognizes student achievement in a specific topic or theme. Focus awards may be earned in combination with a certificate or degree. Classes are lower-division collegiate courses (except where noted) that may transfer to a variety of programs at a four-year college or university as elective credits, program requirements, and/or graduation requirements for the receiving institution. Students are encouraged to check with the receiving institution and their RCC academic advisor for the most accurate transfer requirement information.

¹ A maximum of 3 Cooperative Work Experience credits may be used toward the focus award as approved by focus award advisor.

For more information contact the Social Science Department:

Grants Pass or Medford 541-245-7508
 Toll free in Oregon 800-411-6508, Ext. 7508
 Web address www.roguecc.edu/programs/sustainability
 TTY Oregon Telecom Relay Service, 711

This advising guide is for advising purposes only. Please see current college catalog for additional information on specific college policies and graduation requirements.

RCC is an open institution and does not discriminate. For RCC's non-discrimination policy and a full list of regulatory specific contact persons visit the following webpage: www.roguecc.edu/nondiscrimination.

